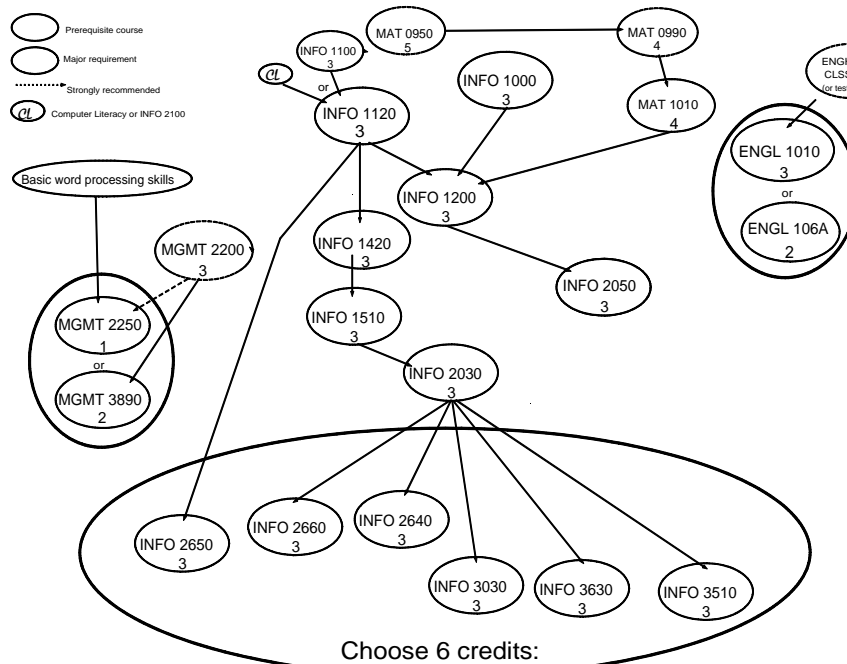


CERTIFICATE
NETWORK ADMINISTRATION

REQUIREMENTS					
COURSE NO	COURSE TITLE	PREREQUISITE	CR	GR	SEM
INFO 1120	Information Systems & Technology Fundamentals	(INFO 1100 grade of C- or better) or (Computer Literacy Exam score of 70% or higher)	3.0		
INFO 1200	Computer Programming I for IS/IT	INFO 1120, MAT 1010, (INFO 1000 or Prog. Aptitude test)	3.0		
INFO 1420	Computer Architecture and Systems Software	INFO 1120	3.0		
INFO 1510	Introduction to System Administration - -Linux/UNIX	INFO 1420 or CS 1030 or CS 1400	3.0		
INFO 2030	Data Communication Fundamentals	INFO 1510	3.0		
INFO 2050	Database Fundamentals	INFO 1200	3.0		
ENGL 106A or ENGL 1010	Career Writing for Technology - A (2) or Introduction to Writing (3)	COMPASS Writing/DRP scores of 80+/77+, or ACT English/ACT Reading scores of 19 +/19+, or completion of ENGH 0990 and CLSS 1170 each with a grade of "C-" or higher, or appropriate placement scores, or challenge by essay assessment for a \$20 fee.	2.0		
MAT 1010	Intermediate Algebra	MAT 0990	4.0		
MGMT 2250 or MGMT 3890	Job Application and Advancement Skills (1) or Career Preparation (2)	Basic word processing skill, MGMT 2200 preferred MGMT 2200	1.0		
Select 6 credits from the following: (Each course may be used only once to fill degree requirements)					
INFO 1000	Computer Programming Concepts (3)	MAT 0990 & (INFO 1100 Min. C-) or (Computer Literacy 70%)	6.0		
INFO 2640	Router Management (3)	INFO 2030 or CS 2600			
INFO 2650	Voice and Data Cabling Fundamentals (3)	INFO 1000 or 1100 or 1120 or CS 1030 or 1400			
INFO 2660	Information Security Fundamentals (3)	INFO 2030			
INFO 3030	Networks and Internetworking (3)	INFO 2030			
INFO 3510	Advanced System Administration- -Linux/UNIX (3)	INFO 2030 or (INFO 1510 & CS 2600)			
INFO 3620	System Administration-Windows (3)	INFO 2030 or CS 2600			
INFO 3630	Advanced System Administration- -Windows Server (3)	INFO 3620			
Total Credits Required for Degree			31.0		

* NOTE: Overall GPA or 2.0 or above with a minimum GPA of 2.5 in all discipline core, specialty core, and elective courses with not grade lower than a C-.

Following is a diagram of should be aware that not all semester. (Prerequisites credit, but the knowledge is completion of the next Introductory Algebra is a but is not a major inside the dotted line.) the descriptions and



prerequisites. Students courses are taught every may not be required for the necessary for successful course.) (Ex. MAT 1010 - prerequisite for INFO 1200, requirement and is listed The UVU catalog contains prerequisites for all courses.

FALL 2008

Advisor: Patti Miner (801) 863-8408

minerpa@uvu.edu